

PICTURE LYRICS



A musical staff with a treble clef. The treble clef is a large, colorful symbol on the left. The staff has five horizontal lines. Three notes are placed on the staff: the first note is on the first line (G4), the second note is on the second line (A4), and the third note is on the second space (B4). Each note is a colorful, rounded shape with a rainbow gradient. Below the first note is the word "DO", below the second is "RE", and below the third is "MI".

DO RE MI

FROM



THE SOUND OF MUSIC



let's

at the

start

very beginning



a

very good

place

to

start

when



you



read

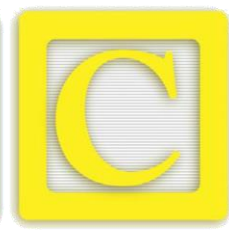


you



begin

with



when



you



sing

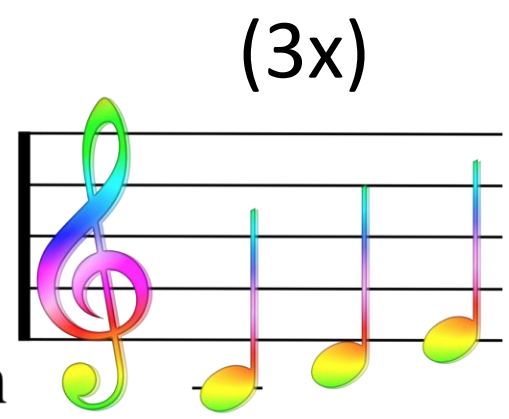


you



begin

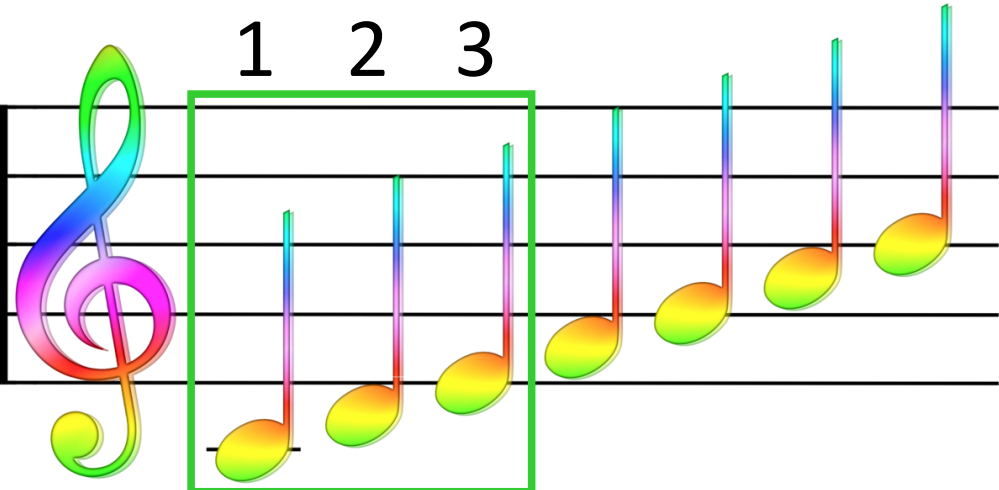
with



do

re

mi

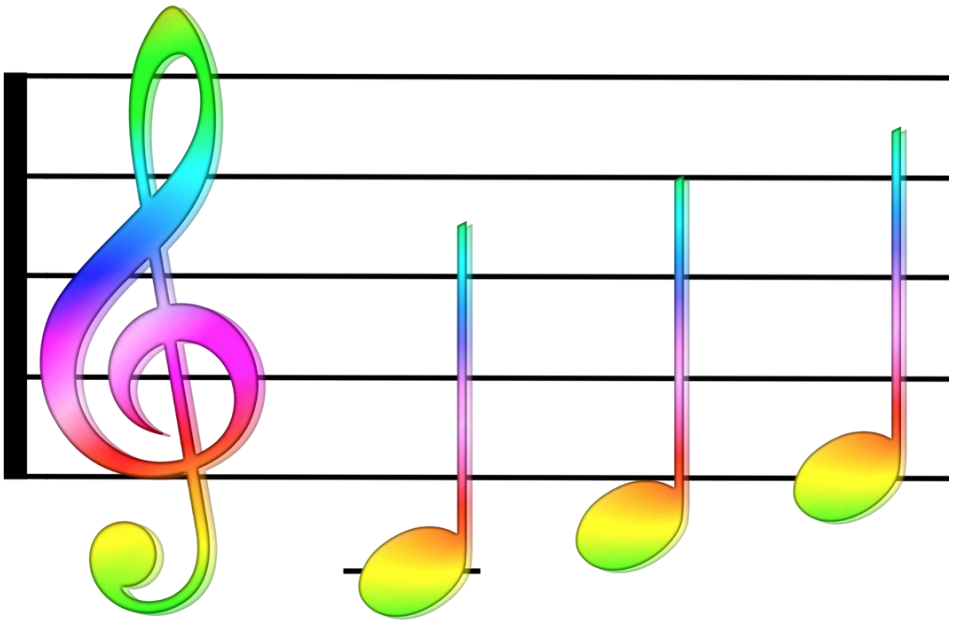


the first three notes

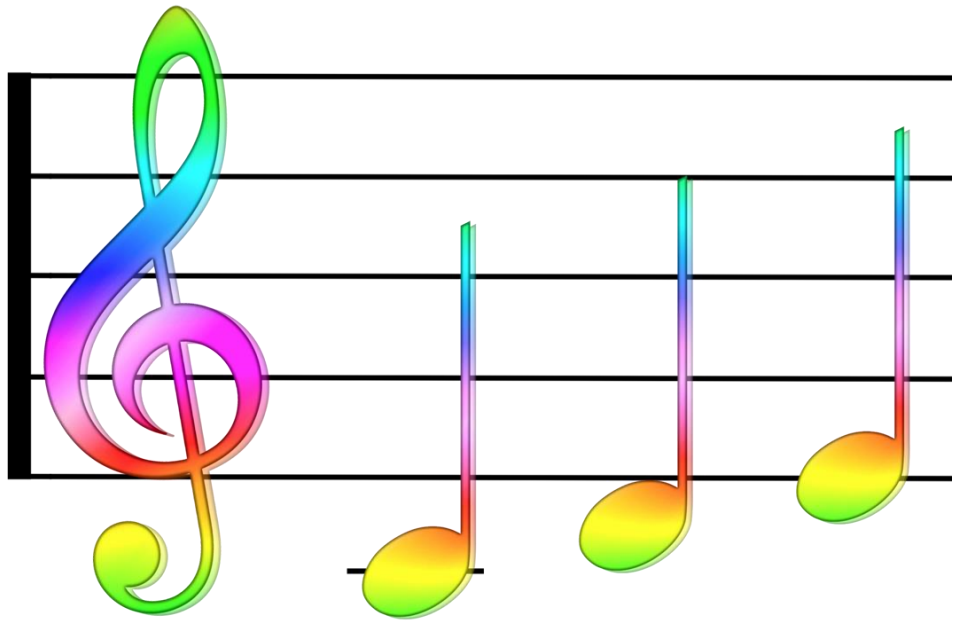
just happen



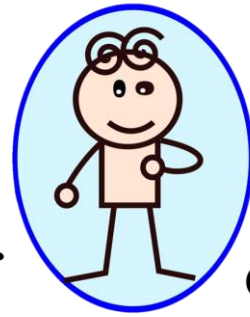
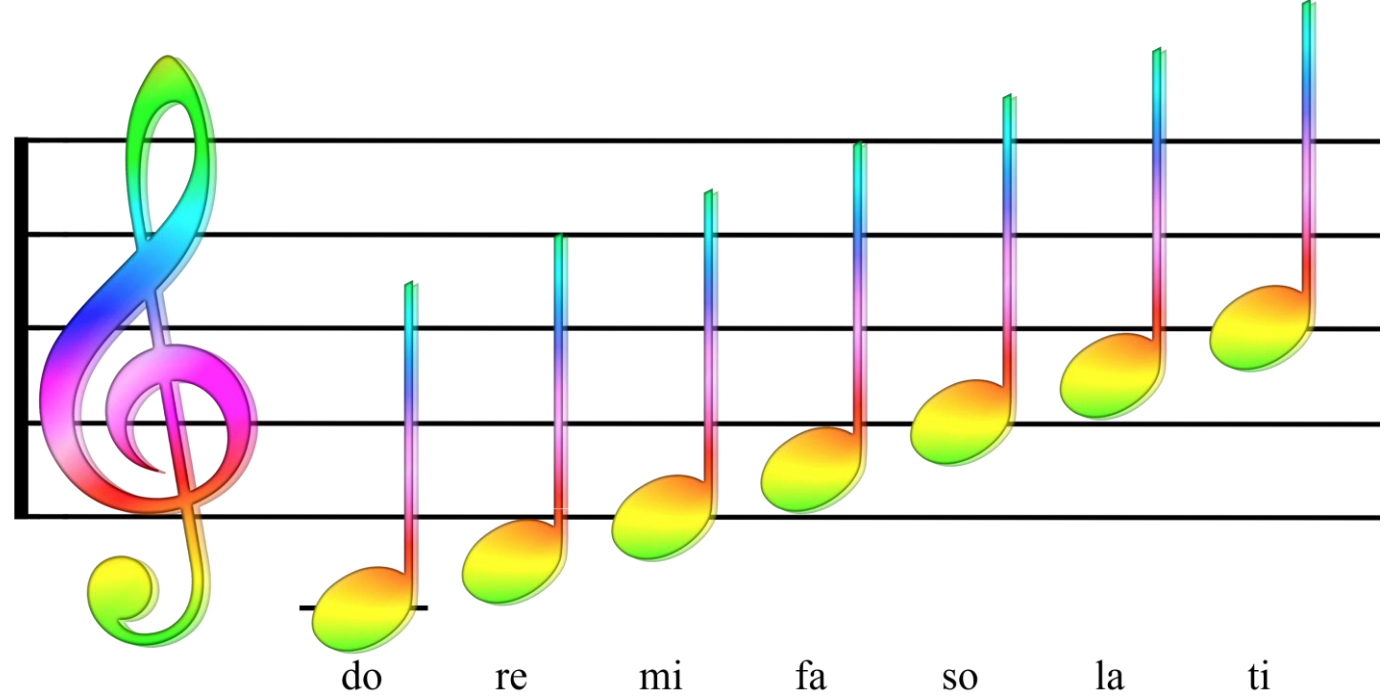
to be



do re mi



do re mi



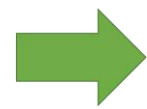
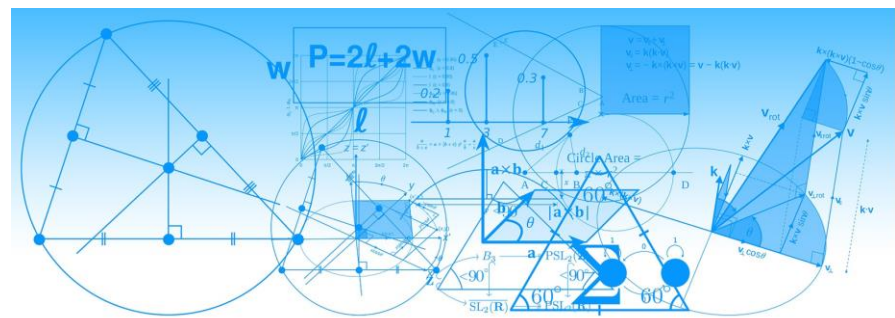
oh let's

if

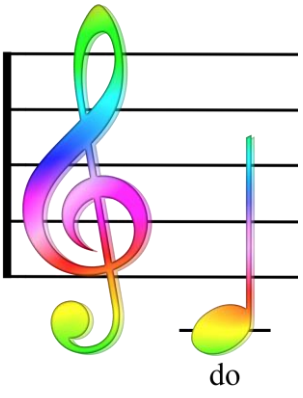
can

see

I

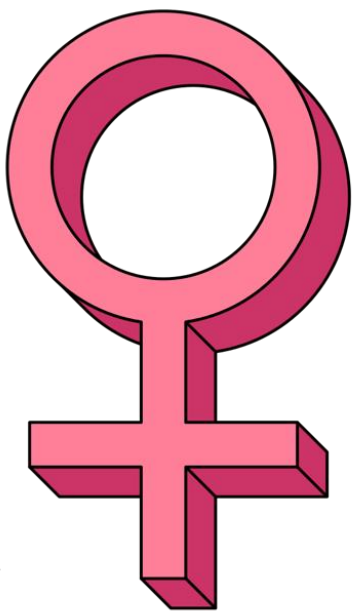


$1+1=2$



doe a deer

a



female



deer



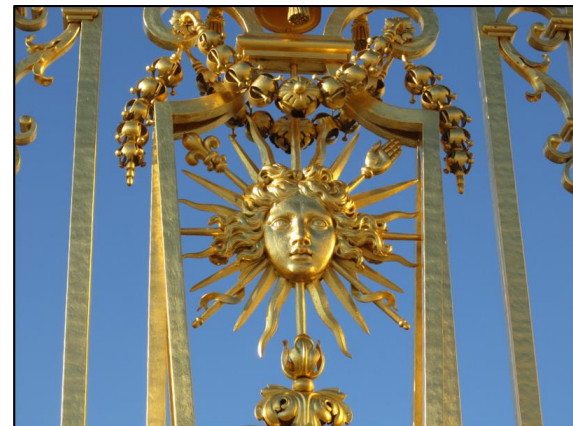
ray

a

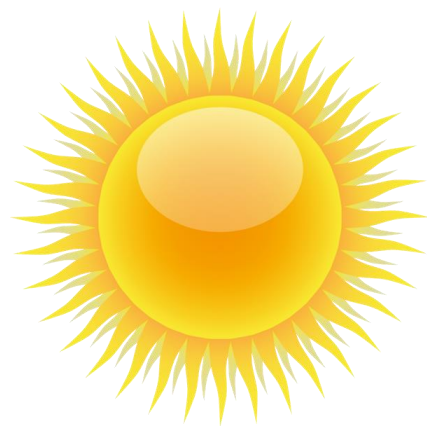


drop

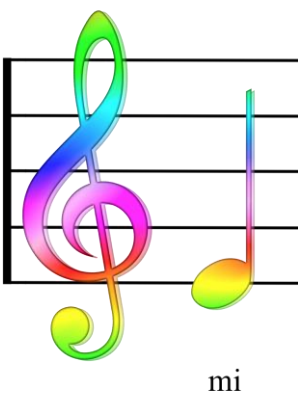
of



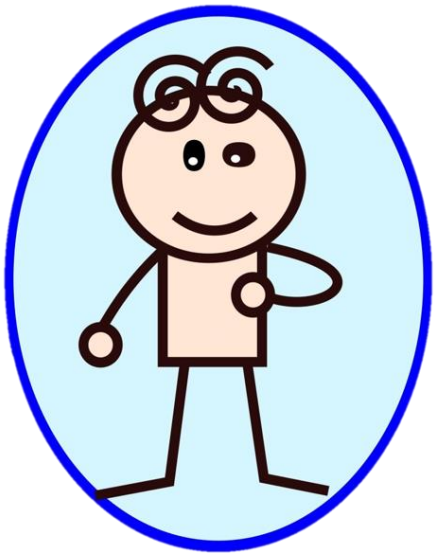
golden



sun



mi



me

a



Hello
my name is

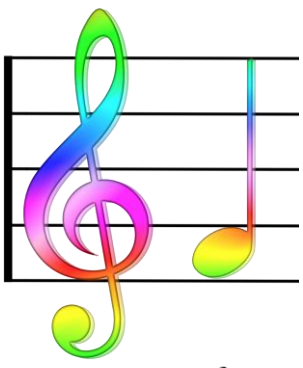
NAME



name



I call myself



fa



far

a

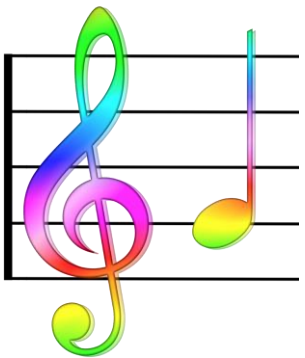


long long way

to



run

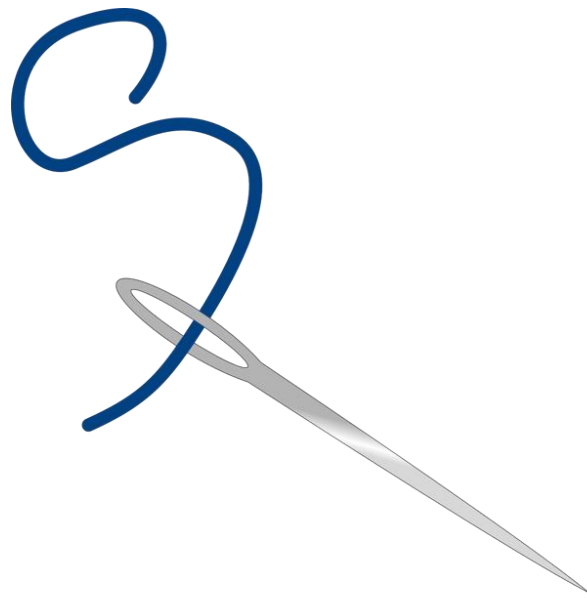


so

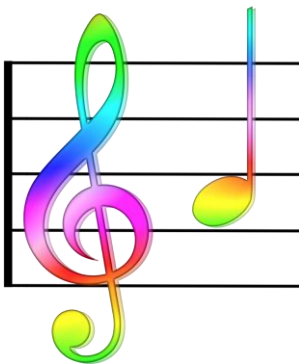


sew

a



needle pulling thread



la



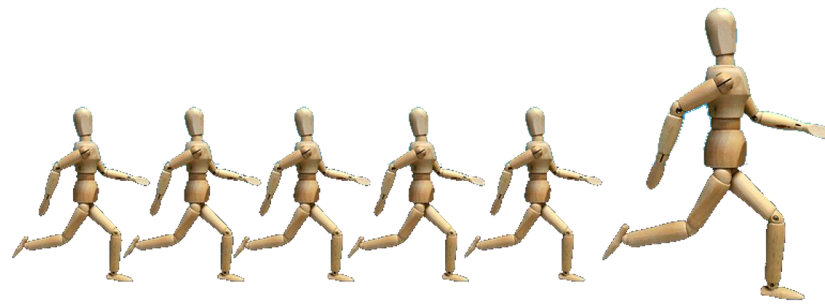
la

a



note

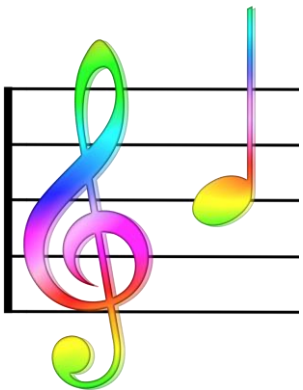
to



follow



sew



ti



tea

a



drink

with



jam and bread



bring us



back

to



doe



that will

