

PICTURE LYRICS



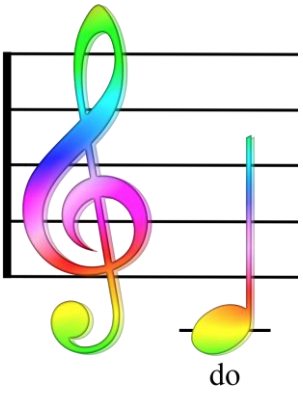
DO RE MI

A musical staff with a treble clef. The staff has five horizontal lines. Below the staff, three notes are shown: a whole note on the first line (labeled 'DO'), a half note on the second line (labeled 'RE'), and a half note on the third line (labeled 'MI'). The notes are colored with a rainbow gradient.

FROM

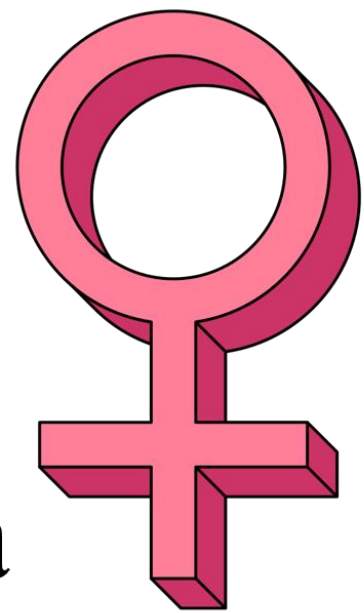


THE SOUND OF MUSIC



doe a deer

a



female



deer



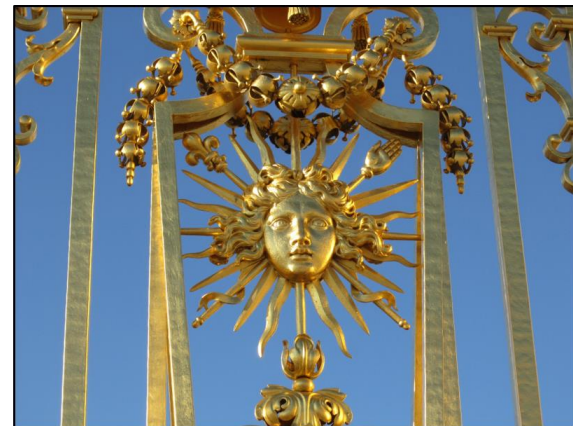
ray

a

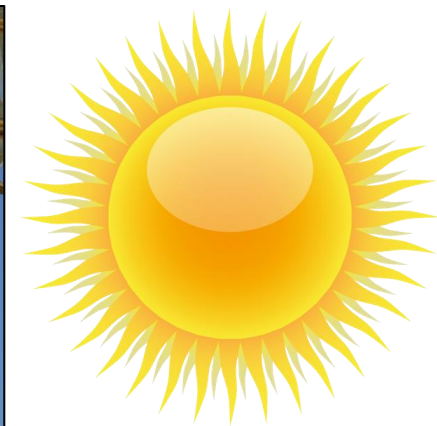


drop

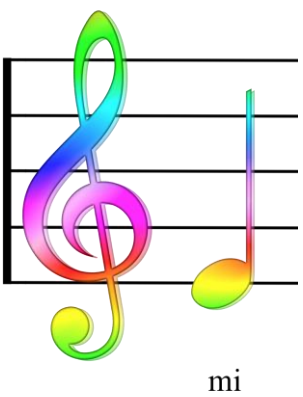
of



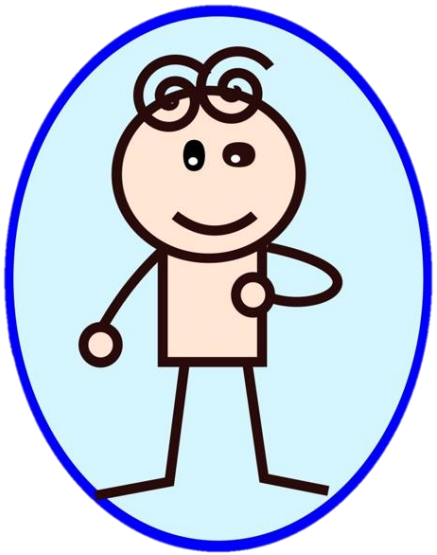
golden



sun



mi



me

a



Hello
my name is

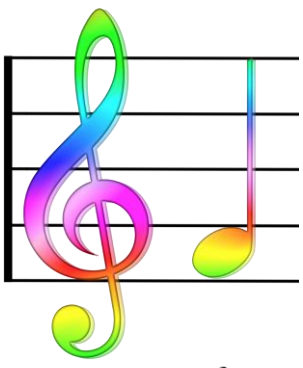
NAME



name



I call myself



fa



far

a

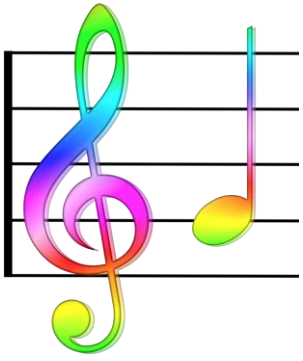


long long way

to



run

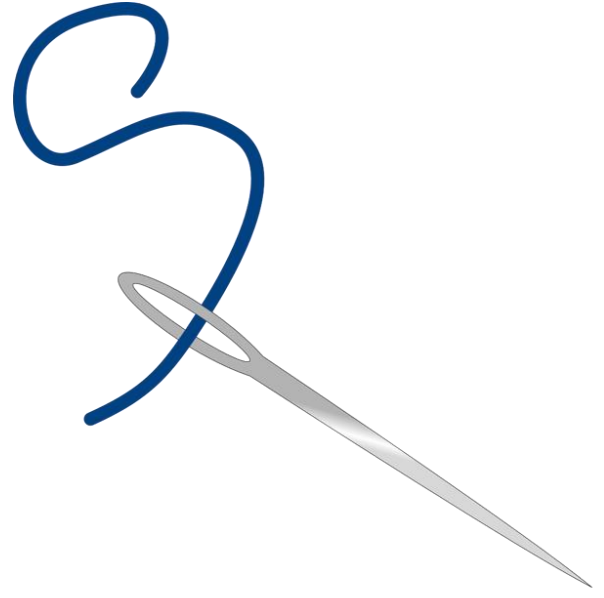


so

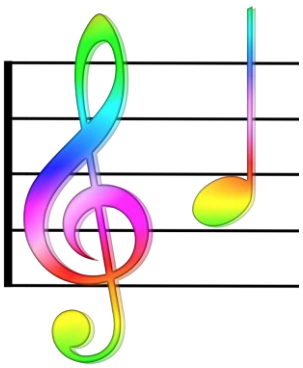


sew

a



needle pulling thread

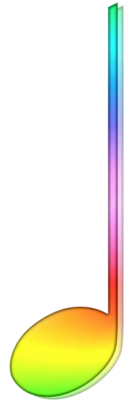


la



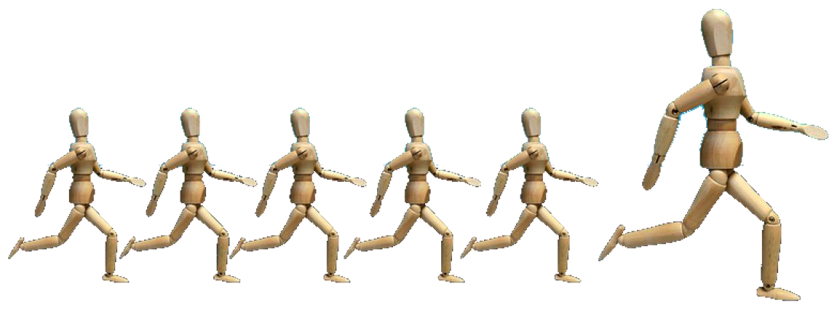
la

a



note

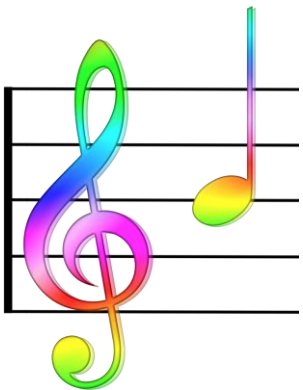
to



follow



sew



ti



tea

a



drink

with



jam and bread



bring us



back

to



doe



OH



OH



OH

